

Options

To optimize the usage of our handling and lifting equipment for your needs.

We have in this document gathered all the options available for our products.

If you have any questions, do not hesitate to contact us.

Available options for our products:

Manipulator Arms, Rail Systems, Control handles, Control Boxes and End Effectors

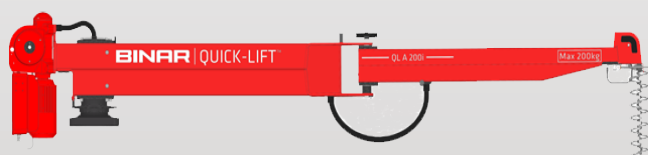
OPTIONS

FOR MANIPULATOR ARMS

OPTIONAL COLOUR

for Quick-Lift Arm 50i/100i/ 200i/ 300i
and Quick-Lift Arm 50i/ 100i /200i Overhead Mounted

To best suit your specific production site and needs, our various Quick-Lift Arm models are available in colour of your choice.
Standard colour Quick-Lift Arm: RAL 3002 (Carmine Red)



MIDDLE LINK for QLA 50i/100i/200i/300i

By adding a Middle link between the inner and outer QLA the outer arm can be folded in along the inner arm to a parallel position. The Arm length is extended with 200 mm. The Middle link can not be combined with Parking brake
Colour: RAL 3002

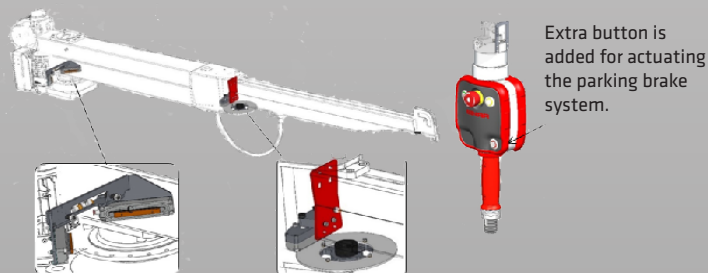


PNEUMATIC PARKING BRAKE for QLA 50i/100i/200i/300i

The parking brake is designed to optimize and streamline the operator's daily work.

It consists of two units, the inner and the outer brake. Inner brake; Brake calliper's are added and the existing end stop disk is used. For the outer brake there is an extra disc and a brake calliper added. Not sold separately - Only together with new arm. The brake function is activated by a button on the control handle.

The parking brake can not be combined with Middle link.



QUICK-LIFT ARM 50i/100i/200i/300i QUICK-LIFT ARM 50i/ 100i/ 200i OM	Part no.
Optional colour of Arm and Motor unit. RAL code specification required when placing order	70006
Optional colour of Pillar. RAL code specification required when placing order	70002
Optional colour of Floor plate (part no. 000494 see page 2). RAL code specification required when placing order	70005

MIDDLE LINK FOR QLA	Part no.	Weight
QLA 50i Arm length 3 m	013673	7 kg / 15,4 lbs
QLA 100i Arm length 3 m	013675	8 kg / 17,6 lbs
Arm length 4 & 5 m	013677-1	10 kg / 22 lbs
QLA 200i Arm length 3 m	013677-2	11 kg / 24,2 lbs
Arm length 4 & 5 m	013679	15 kg / 33 lbs
QLA 300i Arm length 3 & 4 m	013679	15 kg / 33 lbs

PNEUMATIC PARKING BRAKE FOR QLA 50i/100i/200i/300i	Part no.	Weight kg
QLA 50i 3m	013795	6 kg / 13,3 lbs
QLA 100i Arm length 3 m	013796	6,6 kg / 14,5 lbs
Arm length 4 & 5 m	013797	6,9 kg / 15,2 lbs
QLA 200i Arm length 3 m	013797	6,9 kg / 15,2 lbs
Arm length 4 & 5 m	013798	7,6 kg / 16,8 lbs
QLA 300i Arm length 3 & 4 m	013798	7 kg / 16,8 lbs

Binar Quick-Lift Systems AB

Box 2014 • SE-461 11 TROLLHÄTTAN • Sweden
ph +46 (0)520 47 40 00 • e-mail info.quicklift@binar.se
web www.binarquicklift.com

BINAR
Improving your productivity

OPTIONS

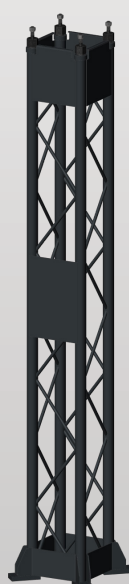
FOR MANIPULATOR ARMS

OPTIONAL COLOUR AND HEIGHT for Pillar and Floor plate

To best suit your specific production site and needs, our pillars and floor plates are available in colour of your choice.
Pillar and floor plate: RAL 7016 (Anthracite Grey)



Pillar Part no. 013811 (Standard)
Pillar Part no. 013812 (Optional length)
4 pcs M20 adjustment screws included
Required floor thickness of >160 mm.
Required concrete quality C20/25
Anchor bolts not included.
Pillar standard colour: RAL 7016 (Anthracite Grey)



Pillar Part no. 013814 (Standard)
Pillar Part no. 013815 (Optional length)
4 pcs M20 adjustment screws included
Required floor thickness of >200 mm.
Required concrete quality C20/25
Anchor bolts not included.
Pillar standard colour: RAL 7016 (Anthracite Grey)



Floor plate Part no. 000494
Dimension 800 x 800 mm, thickness 30 mm to use when floor thickness or quality is insufficient.
Floor plate standard colour: RAL 7016 (Anthracite Grey)

PILLAR & FLOOR PLATE	Part no.	Weight
Standard pillar For QLA 50i 3m, 100i 3m/ 4m/ 5m and 200i 3 m	013811	113 kg / 249 lbs
Optional height of pillar. Length between 1500 - 5000 mm. Delta weight For QLA 50i 3m, 100i 3m/ 4m/ 5m and 200i 3 meters	013812	+/- 28 kg/m +/- 61,7 lbs/m
Standard pillar For QLA 200i 4m /5m and 300i 3m /4m/ 5m	013814	121 kg /266,8 lbs
Optional height of pillar. Length between 1500 - 5000 mm. Delta weight For QLA 200i 4m /5m and 300i 3m /4m/ 5m	013815	+/- 29 kg/m +/- 63,9 lbs/m
Floor plate	000494	150 kg / 330,7 lbs
Optional colour of Pillar. RAL code specification required when placing order	70002	
Optional colour of Floor plate. RAL code specification required when placing order	70005	

Binar Quick-Lift Systems AB

Box 2014 • SE-461 11 TROLLHÄTTAN • Sweden
ph +46 (0)520 47 40 00 • e-mail info.quicklift@binar.se
web www.binarquicklift.com

BINAR
Improving your productivity

OPTIONS

FOR RAIL SYSTEMS

OPTIONAL COLOUR

for Quick-Lift Rail 125i/ 200i/ 300i

Quick-Lift Rail Torque and Quick-Lift Driven

To best suit your specific production site and needs, the motor unit of Binar Quick-Lift Rail systems are available in colour of your choice.

Motor unit standard colour: RAL 3002 (Carmine Red)



QUICK-LIFT RAIL 125i/ 200i/ 300i QUICK-LIFT RAIL TORQUE, QUICK-LIFT DRIVEN	Part no.
Optional colour of Motor unit. RAL code specification required when placing order	70007

PNEUMATIC PARKING BRAKE

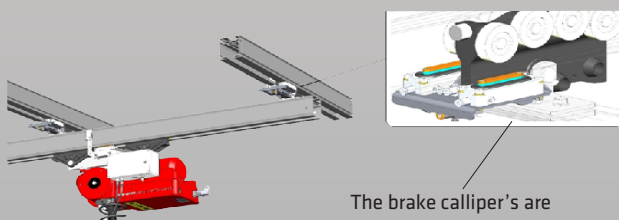
for Quick-Lift Rail 125i

A pneumatic parking brake system can be added to the QLR 125i system. The brake is designed to work with eepos rail system.

The brake consist of three units, two at the fixed beams, X-direction, and one at moving beam, Y-direction, together with a pneumatic control unit.

The stop / brake function is activated by a button in the handle.

All three brakes are added to the mounting brackets. A special mounting bracket for the with Ø 20mm holes is used for QLR



An extra button is added for actuating the parking brake system.

A special parameter file is required.



The brake calliper's are attached to the rail trollies mounting plates and the brake pads are using the lower surface of the rail's for braking.

PNEUMATIC PARKING BRAKE FOR QLR 125i	Part no.	Weight
Three position parking brake system. Button actuated	013318	4,3 kg / 9,5 lbs

Binar Quick-Lift Systems AB

Box 2014 • SE-461 11 TROLLHÄTTAN • Sweden
ph +46 (0)520 47 40 00 • e-mail info.quicklift@binar.se
web www.binarquicklift.com

BINAR

Improving your productivity

OPTIONS

FOR RAIL SYSTEMS

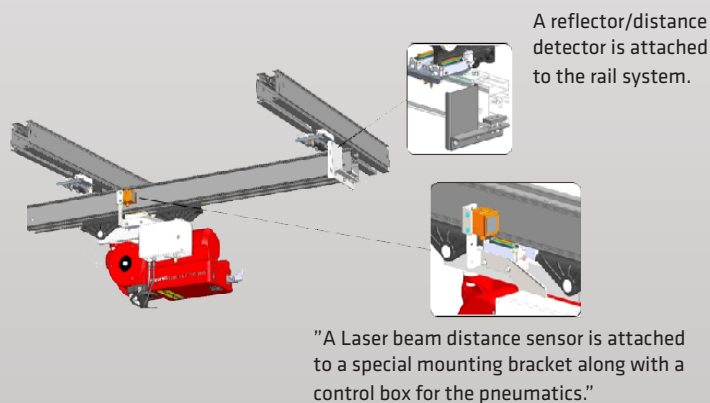
STOP-AND-GO SYSTEM for Quick-Lift Rail 125i

A pneumatic Stop and Go brake system can be added to the QLR 125i system. The Stop and Go system is ideally used for reduction of the moving mass. The brake system is designed to work with eepos rail system.

The system consists of three brake units, two at the fixed rails in X-direction, one at moving rail in Y-direction and a pneumatic control box.

The stop function is activated by a Laser that detects a specific position in Y-direction. The activated stop time can be programmed in iLab 2.

All three brake units are added to special mounting brackets and also a special mounting bracket is used for the QLR motor unit with Ø 20mm holes.



STOP AND GO SYSTEM FOR QLR 125i

Three position stop system.
Laser actuated

Part no.

Weight

013316

5,0 kg / 11 lbs

MOUNTING BRACKET for QLR 125i

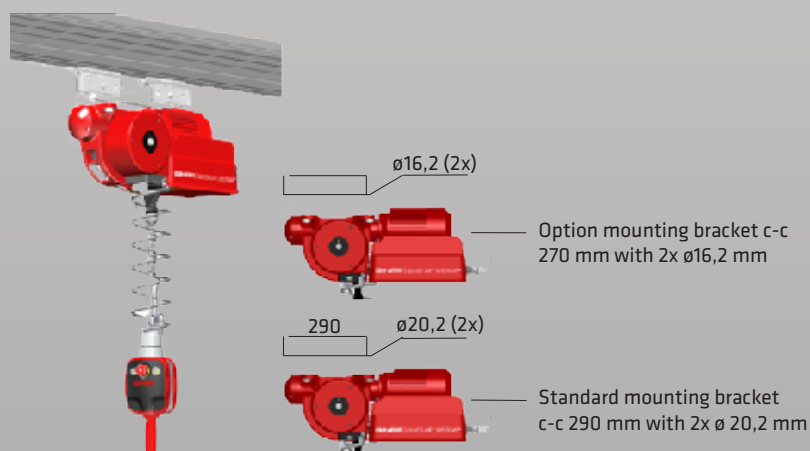
QLR 125i is delivered with standard mounting bracket for pin Ø 20 mm

MOUNTING BRACKET FOR QLR 125i

Option Mounting bracket for pin
Ø 16 mm

Part no.

011544



Binar Quick-Lift Systems AB

Box 2014 • SE-461 11 TROLLHÄTTAN • Sweden
ph +46 (0)520 47 40 00 • e-mail info.quicklift@binar.se
web www.binarquicklift.com

BINAR
Improving your productivity

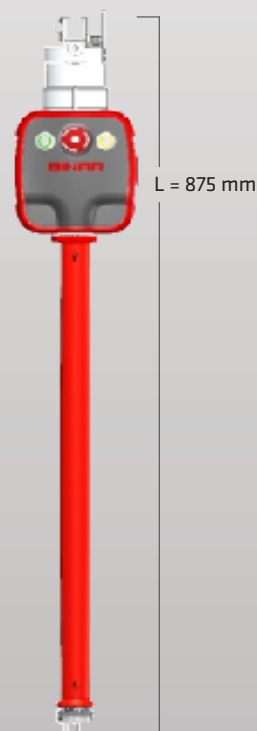
OPTIONS

FOR CONTROL HANDLES

OPTIONAL LENGTH for Control Handles

To optimize the operators' daily usage of our lifting and handling solution, our Control Handles are available in various lengths. All Binar Quick-Lift control handles are equipped with mechanical Swivel for integrated pneumatics and signal interface.

Standard length: 420 mm



CONTROL HANDLE FOR MECHANICAL END	Part no.	Weight
Standard L= 420 mm	012842	2,6 kg / 5,7 lbs
Long L=575 mm	012842-2	2,9 kg / 6,4 lbs
Extra Long L=875 mm	012842-3	3,2 kg / 7 lbs
CONTROL HANDLE WITH 5/2 PNEUMATIC VALVE		
Standard L=420 mm	012845	3,3 kg / 7,3 lbs
Long L=575 mm	012845-2	3,6 kg / 7,9 lbs
Extra Long L=875 mm	012845-3	3,9 kg / 8,6 lbs
CONTROL HANDLE WITH VACUUM EJECTOR		
Standard L=420 mm	012843	3,2 kg / 7 lbs
Long L=575 mm	012843-2	3,5 kg / 7,7 lbs
Extra Long L= 875 mm	012843-3	3,8 kg / 8,4 lbs
CONTROL HANDLE WITH PNEUMATIC CYLINDER		
Standard L= 420 mm	012844	4,8 kg / 10,6 lbs

Binar Quick-Lift Systems AB

Box 2014 • SE-461 11 TROLLHÄTTAN • Sweden
 ph +46 (0)520 47 40 00 • e-mail info.quicklift@binar.se
 web www.binarquicklift.com

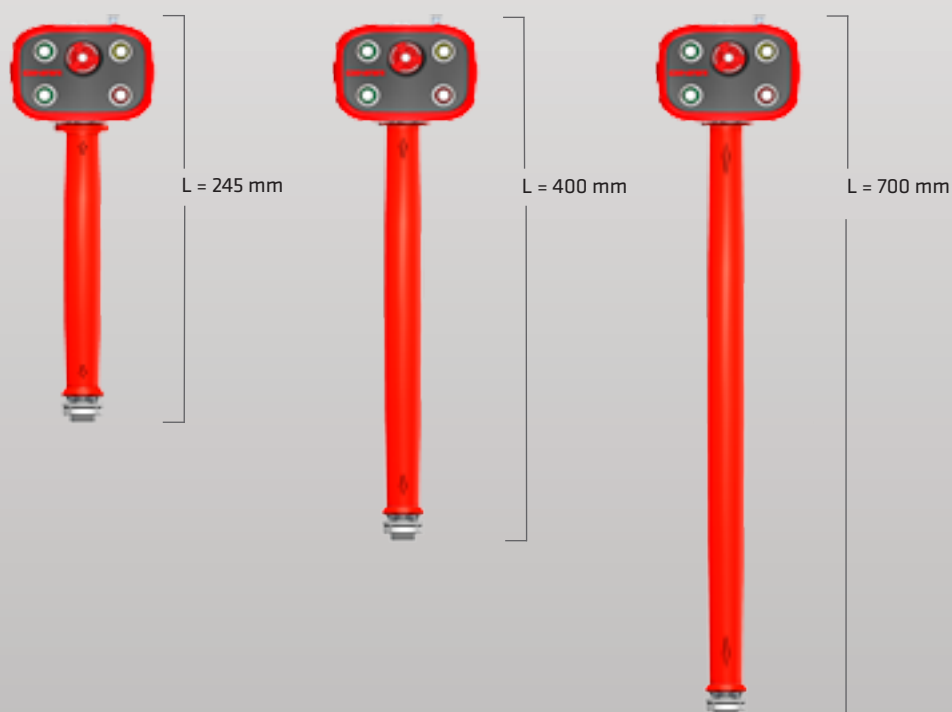
BINAR
Improving your productivity

OPTIONS

FOR EXTERNAL HANDLES

OPTIONAL LENGTH for External Handles

Binar Quick-Lift External handle is to be used together with Quick-Lift Control box. All Binar Quick-Lift control handles are equipped with mechanical Swivel for integrated pneumatics and signal interface.
Standard length: 245 mm



EXTERNAL HANDLE	Part no.	Weight
Standard length L=245 mm	012897	1,2 kg / 2,6 lbs
Long L=400 mm	012899	1,6 kg / 3,5 lbs
Extra Long L=700 mm	012902	2,1 kg / 4,6 lbs

Binar Quick-Lift Systems AB

Box 2014 • SE-461 11 TROLLHÄTTAN • Sweden
ph +46 (0)520 47 40 00 • e-mail info.quicklift@binar.se
web www.binarquicklift.com

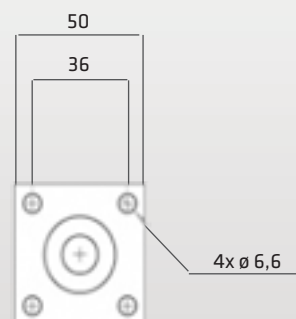
BINAR
Improving your productivity

OPTIONS

FOR CONTROL BOXES AND END EFFECTORS

FLANGE for End effectors

Binar Quick-Lift control boxes are used together with Quick-Lift External Handle. All Binar Quick-Lift are equipped with our unique integrated, mechanical and electrical swivel. Optional flanges ensure a secure connection to various end effectors.

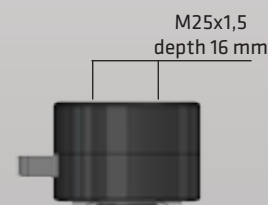


FLANGES FOR CONNECTING END EFFECTORS TO CONTROL BOXES	Part no.	Weight
Flange for screw connection to end effector, zinc plated MF65 10.9 M16x60. Max. shaft ø 35 mm	013281-1	0,4 kg / 0,9 lbs
Flange for welded connection to end effector, untreated. Max. shaft ø 25 mm	013281-2	0,4 kg / 0,9 lbs

QUICK-COUPLING for Control Handles

We offer a range of accessories and adapters to enable fast and easy exchange of end effector or connecting older end effectors with new control handles.

QUICK-COUPLING FOR CONTROL HANDLES	Part no.	Weight
Quick-Coupling for loads up to 300 kg / 660 lbs To be attached to the handle threads.	012903	1,3 kg / 2,9 lbs



QUICK-COUPLING PIN for End effectors

Recommended to be used when the customer wants to use the Quick-coupling function for a fast exchange of end effectors. This part is to be attached/mounted to the end effector. With M14 threads

QUICK-COUPLING PIN FOR END EFFECTORS	Part no.	Weight
Quick-Coupling pin for loads up to 300 kg / 660 lbs To be attached to the end effector.	013411	0,2 kg / 0,44 lbs



Binar Quick-Lift Systems AB

Box 2014 • SE-461 11 TROLLHÄTTAN • Sweden
ph +46 (0)520 47 40 00 • e-mail info.quicklift@binar.se
web www.binarquicklift.com

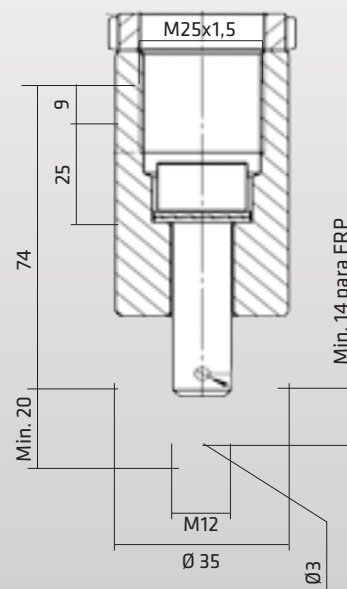
BINAR
Improving your productivity

OPTIONS

FOR CONTROL BOXES AND END EFFECTORS

ADAPTER for old end effector in new control handle

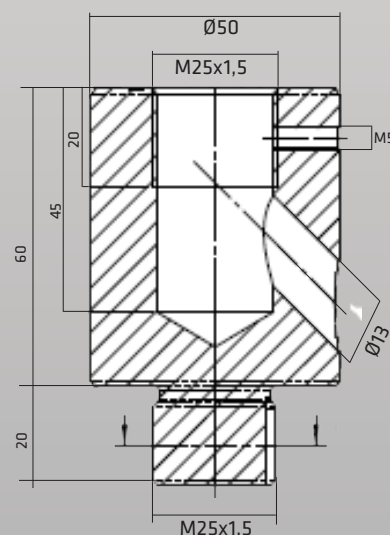
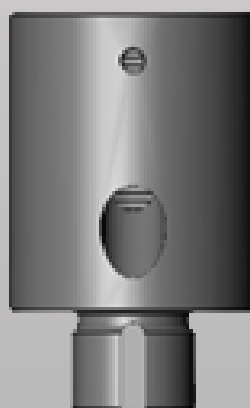
Adapter for old end effector in new Control handle
To be used to connect an old end effector with a M12 fitting to a new Control handle. The adapter is positioned between the old end effector and the new control handle. See measurements



ADAPTER FOR OLD END EFFECTOR IN NEW CONTROL HANDLES	Part no.	Weight
Adapter - new control handle for loads up to 125 kg / 275 lbs	013304	0,2 kg / 0,44 lbs

ADAPTER for old end effector in new control handle

Adapter with hole for Air hose for old end effector in new control handle.
To be used when using Control handle with Vacuum ejector, part no. 012843, and using a Quick-coupling to connect the end effector.
The adapter is attached to the Control handle threads.



ADAPTER WITH AIR HOLES FOR VACUUM	Part no.	Weight
Adapter - Control handle for vacuum for loads up to 300 kg / 660 lbs	013817	0,3 kg / 0,66 lbs

Binar Quick-Lift Systems AB

Box 2014 • SE-461 11 TROLLHÄTTAN • Sweden
ph +46 (0)520 47 40 00 • e-mail info.quicklift@binar.se
web www.binarquicklift.com

BINAR
Improving your productivity